

Bitfocus Companion Intelligent Module Specification

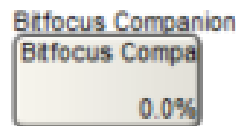
Contents

Introduction

Intended Use

Intelligent Module Features

Additional Notes



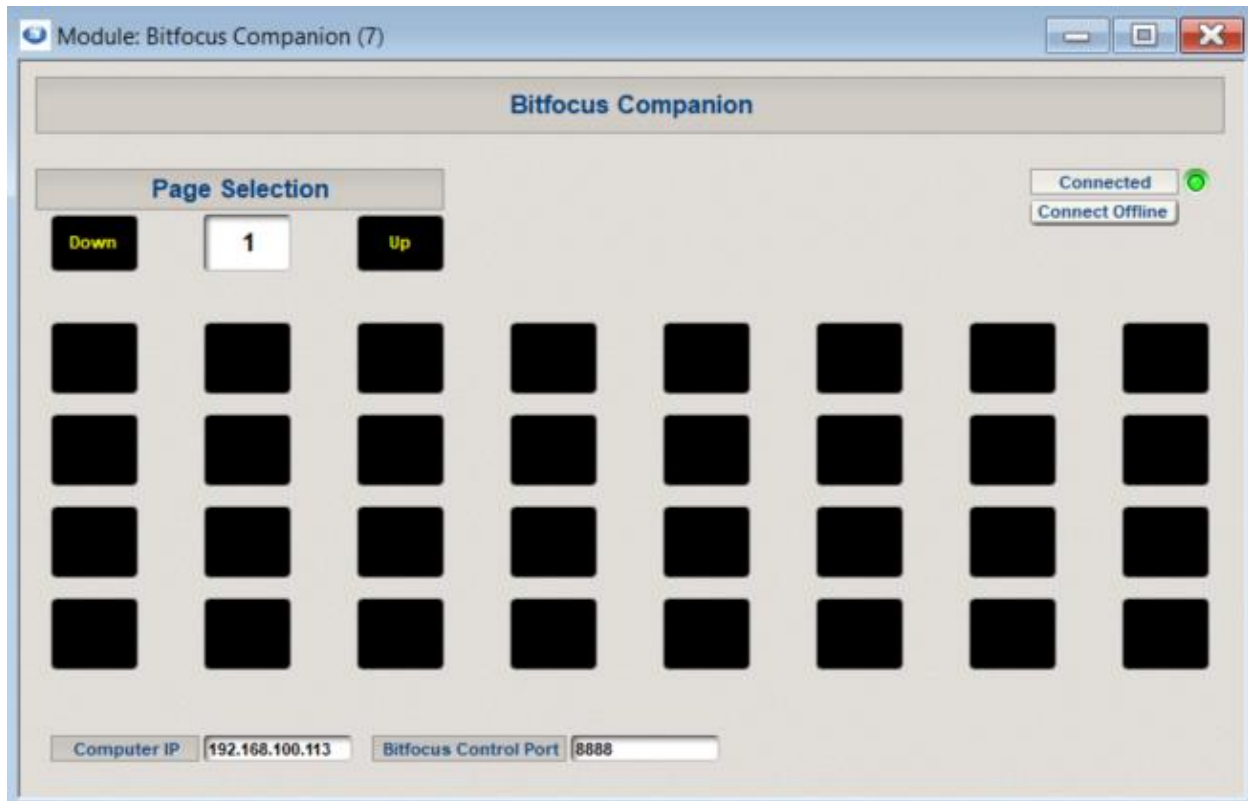
Introduction

This document covers the use and operation of an Intelligent Module made to control an instance of Bitfocus Companion. All the HTTP requests will be sent to the host computer running Bitfocus Companion

Intended Use

This document outlines the requirements, features, and operation of the Bitfocus Companion Intelligent Module. The Bitfocus Companion Intelligent Module is intended to provide control over the software running on a host computer from within Composer, with a Symetrix touch screen, or with a Control Screen running on Windows or the Control Server.

Intelligent Module Features



This Bitfocus Companion Intelligent Module allows for the control of the user interface for the Bitfocus Companion software. Bitfocus Companion should be configured on the host computer before attempting to control the software from the Intelligent Module.

Controls Include:

Connected - An LED is turned on once a successful HTTP status code of 200 is returned.

Connect Offline - Allows the user to communicate with the Bitfocus Companion software while offline from a Symetrix DSP. This button must be engaged while offline for the module to operate.

Page Select - Switches between the 99 banks of possible buttons.

Buttons - Each button press on the Intelligent Module will send an HTTP request to press the associated button in the Bitfocus software.

Computer IP - The IP address of the host computer running the Bitfocus software.

Bitfocus Control Port - The configured port Bitfocus is using to communicate with the host computer running Bitfocus.

Additional Notes:

- Labels or images for the buttons must be provided by the Composer programmer.
- Although page selection is a supported feature with this Intelligent Module. There is not currently a way to update any labels on the buttons to reflect that change.
- Bitfocus Companion must be running on the host computer for the Intelligent Module to work properly.
- This module requires Composer version 8.1.