

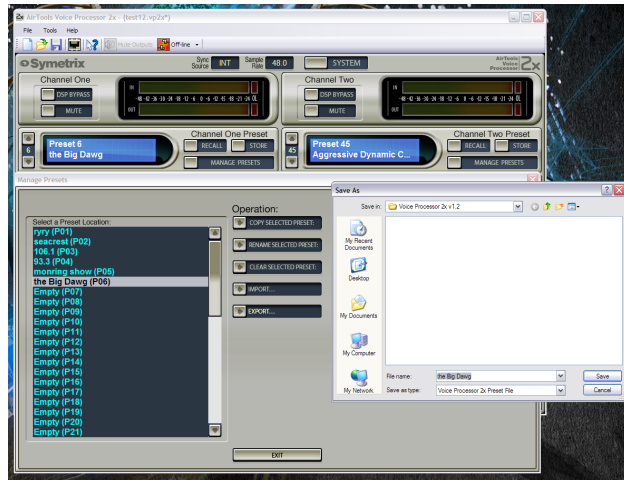
Import and Export Presets Feature for the AirTools 2x and 2m

The ability to “import/export user presets” has been added to both the Airtools 2x Digital Voice Processor and the Airtools 2m Multiband Processor configuration software.

Note: the procedure is the same for both the Airtools 2x and 2m.

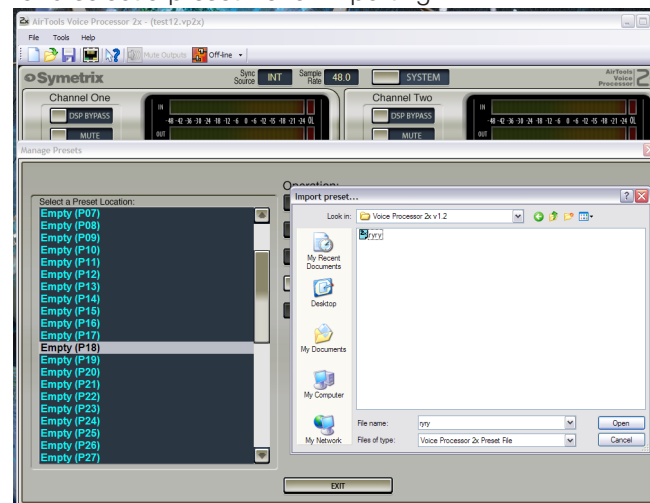
To export a preset:

1. On the main 2x/2m user interface, click the “manage presets” button
2. Select a preset location from the Select a Preset Location list (select it with a left mouse click)
3. Press the EXPORT: button from the Operation list
4. A standard windows file save dialog will pop up allowing you to navigate to a location and provide a name for the preset file you are exporting
5. If finished managing presets, press the EXIT button to leave the Manage Presets dialog



To import a preset:

1. Open the 2x/2m file that you would like to import a preset into
2. On the main 2x/2m user interface, click the “manage presets” button
3. Select a preset location from the Select a Preset Location list on the left (select it with a left mouse click)
4. Press the IMPORT: button from the Operation list
5. A standard windows file open dialog will pop up allowing you to navigate to and select a preset file for importing



6. If your chosen location already contains data, you will be prompted to overwrite it or cancel
7. If finished managing presets, press the EXIT button to leave the Manage Presets dialog.

