

October 2014

Programming ARC controlled Source Select for even numbers channels in Jupiter

When programming Source Select for ARC controls for the Priority Zone Mixer #1 and BGM Zone Mixer #1 within Symetrix Jupiter software, it is important to note that the even numbered Priority Mixer's source selection is reversed from the odd numbered Priority Mixer's source selection.

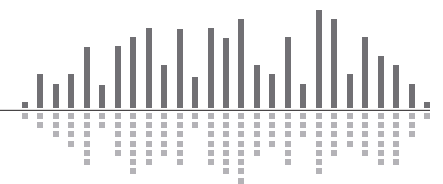
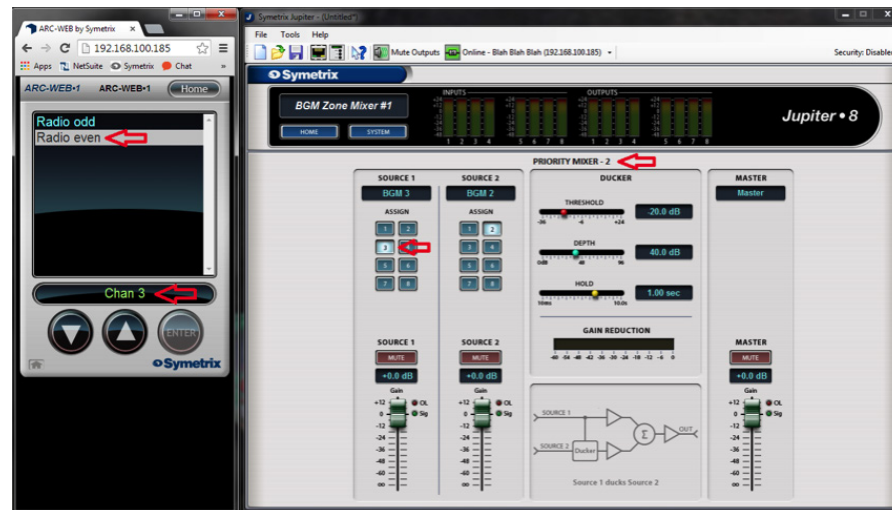
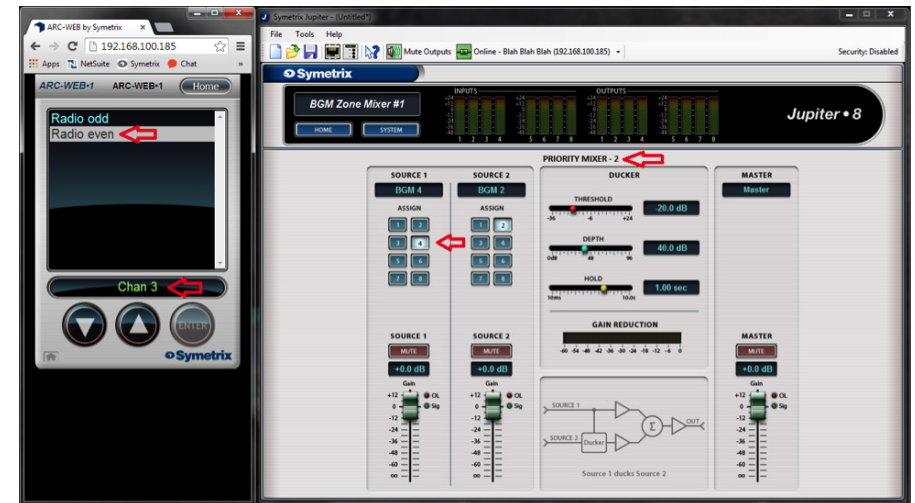
The Priority Mixer's source select controls have been designed this way for use when linking stereo inputs such that input 1 would be selected on Zone Mixer-1 for left channel content and input 2 would be selected on Priority Mixer-2 for right channel content, with there being 4 stereo pair options (1&2, 3&4, 5&6, 7&8).

When setting up the system using only mono inputs feeding mono zones, the following instructions will need to be used during the programming of the ARC remotes. This Tech Tip will walk through the steps to get the even numbered Priority Mixer to select the proper input when the source select radio buttons 1-8 are selected.

In this example a Jupiter 8 is used with ARC-WEB. The "Radio odd" menu that was created in ARC-WEB will demonstrate the operation for Priority Mixer-1.

Notice in the "Radio odd" menu when "Chan 3" is selected from ARC-WEB it selects "3" in the Priority Mixer.

In the picture below, the "Radio even" menu that was created in ARC-WEB will demonstrate the operation for Zone Mixer-2. In the "Radio even" menu when "Chan 3" is selected from ARC-WEB it selects "4" in the Priority Mixer.



October 2014

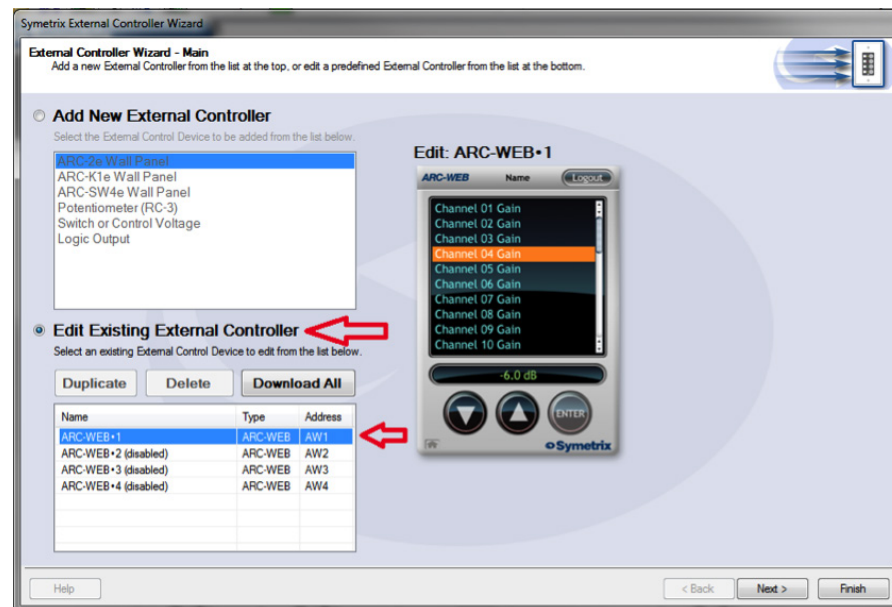
Here are tables showing the maps for the odd and even numbered mixer:

Odd (1, 3, 5, and 7)	
ARC Select	Source Select
1	1
2	2
3	3
4	4
5	5
6	6
7	7
8	8

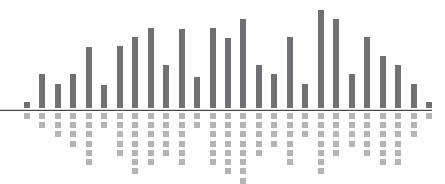
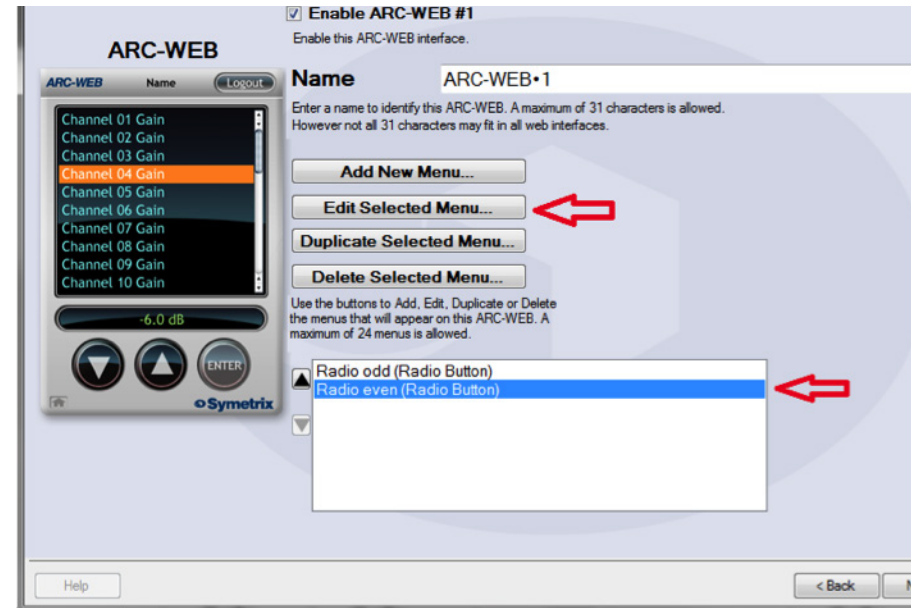
Even (2, 4, 6, and 8)	
ARC Select	Source Select
1	2
2	1
3	4
4	3
5	6
6	5
7	8
8	7

These are the steps to get the even numbered mixers to select the proper source select radio button.

- 1) Program the ARC like normal using the External Controller Wizard.
- 2) After programming the ARC go to the Main window of the External Controller Wizard and select Edit Existing External Controller, select the desired ARC and click Next.



- 3) Select the Menu that has the controls that need to be changed and then click Edit Selected Menu.

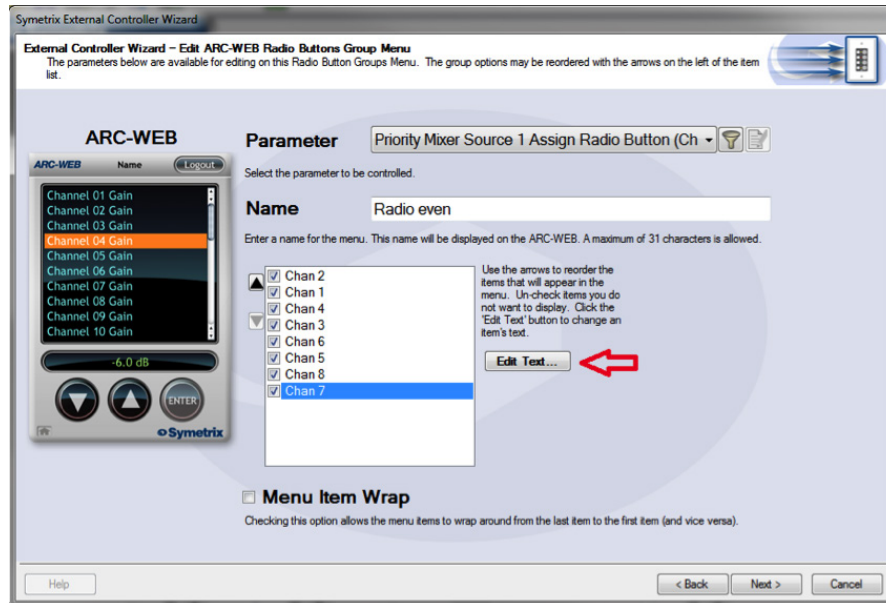


SYMETRIX SOLUTIONS: TECH TIP



October 2014

4) Select Channel 1 and then click the Edit Text. Rename this to Channel 2. Repeat this step for every channel in this menu. Make sure the names of each channel match the map above for the Radio Input field. Then click next.



5) Click Finish then test to make sure the ARC is now selecting the proper source.

